

## Precision monitoring of dry dairy cows herd: effects of environmental conditions, grazing availability and social network behavior

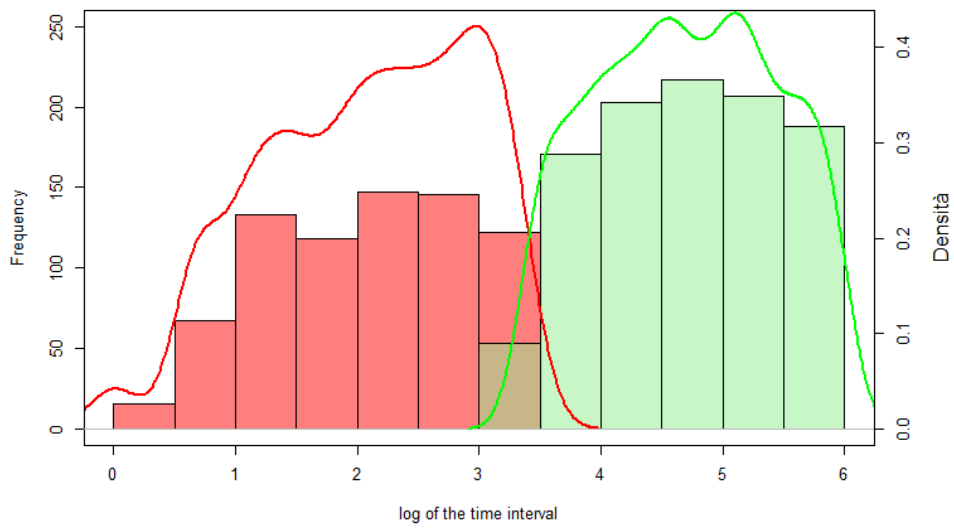
Eliseo Roma,<sup>1</sup> Lorenzo Leso,<sup>1</sup> Santo Orlando,<sup>1</sup> Mariangela Vallone,<sup>1</sup> Matteo Barbari<sup>2</sup>

<sup>1</sup>Department of Agricultural, Food and Forest Sciences, University of Palermo

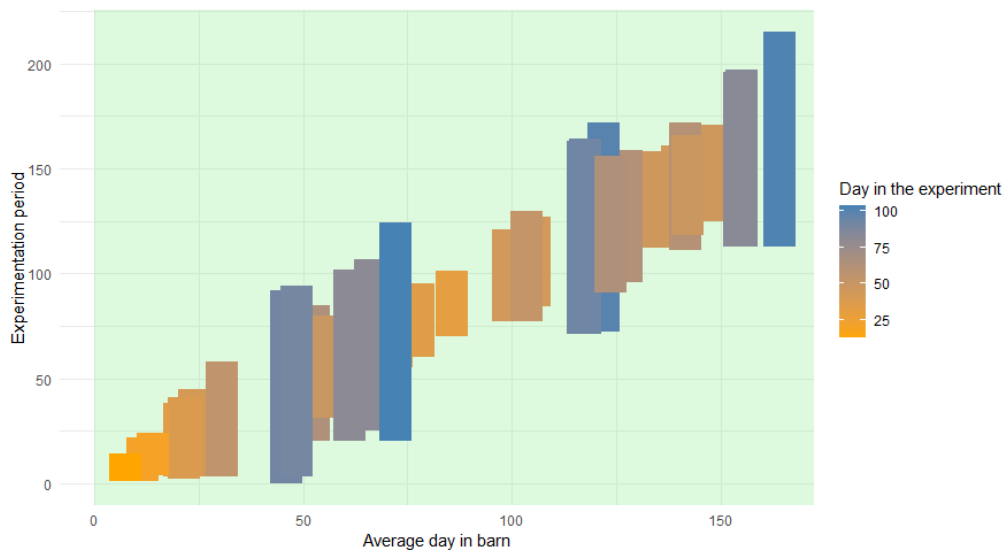
<sup>2</sup>Department of Agriculture, Food, Environment and Forestry, University of Florence, Italy

**Corresponding author:** Santo Orlando, Department of Agricultural, Food and Forest Sciences, University of Palermo, Viale delle Scienze 4, 90128 Palermo, Italy. E-mail: [santo.orlando@unipa.it](mailto:santo.orlando@unipa.it)

 ©The Author(s), 2025  
Licensee [PAGEPress](#), Italy



**Figure S1.** K-means algorithm results obtained from the logarithm transformation of passages.



**Figure S2.** Overlap of individual cows during the experimental period and days in the experiment (height of bar-plot).